

# **C. Leon King High School Marching Lions Band Handbook**



**“Accept ONLY the BEST!”**

**Robert A. Luster**

**Director of Bands and Orchestras**

**e-mail: [robert.luster@hcps.net](mailto:robert.luster@hcps.net)**

**If you have any questions about this handbook,  
please call the Band Office.**

**(813) 744-8333 ext 266**

**Communication is the key to success!!!**

**I am responsible for my behavior and the results of that  
behavior.**

**I am responsible for what I become in life.**

**Life does not accept excuses.**

**I will not let my need to be accepted by others  
keep me from doing what is right.**

**I am somebody.**

**Losers let it happen, winners make it happen.**

**Therefore, when faced with a mountain, I will not quit.**

**I will keep on striving until I climb over,  
find a pass through, tunnel underneath, or  
simply stay and turn the mountain into a gold mine...**

**I will do my best. I know I can. I am a winner.**

**I am somebody.**

**I am an integral part of the King High School**

**Marching Lions.**

## **PREFACE**

To make any organization successful, much planning and effort are required. This handbook was written for the members of the King High School Bands and Lionettes and their parents. Knowledge of its contents will provide each student with an understanding of how he/she may best contribute to the productivity and overall success of the program.

## **PURPOSE OF BAND**

- To improve and cultivate individual musicianship.
- To continuously strive for musical excellence through individual and group performance and commitment.
- To develop character, leadership, and professionalism through the maintenance of high moral standards.
- To promote school spirit.
- To provide entertainment for both school and community activities.

## **THE TRADITION OF THE MARCHING LIONS**

The King High Marching Lions music program is supported by many years of tradition in superiority. Many Lions before you have reaped the benefits of hard work, commitment, professionalism, and musicality. As you begin your career as a Marching Lion and join our musical family, remember the tradition that has made the King Lions who and what they are today...the **STANDARD FOR SUPERIORITY!** As you walk through the hall of tradition, you must remember to uphold the standards that were set by those who have lived the life of a Lion before you.

## **UPHOLDING THE TRADITION**

As a member of the Marching Lions community, you are a representative of the band both inside and outside of school. Your words and actions are reflected upon the entire organization. Therefore, even when you are not participating in a Marching Lion activity, you are still expected to maintain the correct moral attitudes and behaviors expected of a Marching Lion. This includes, but is not limited to: smoking, drinking, use of illegal substances, fighting, using vulgar language, and disrespectful behavior while in uniform, other band clothing, or when associated with the band. Appropriate consequences for not upholding these standards will be taken at the discretion of the band director.

**“If you don’t stand for something,  
you’ll fall for anything!”**

## **SUDA (KHS Marching Lion Pride)**

<b>Spirit</b>	Excitement, Enthusiasm, Desire, Pride, Self-Motivation
<b>Unity</b>	Individual members and sections pulling together as one
<b>Discipline</b>	Self-control, Concentration, Dedication, Commitment
<b>Attitude</b>	Having the desire to excel in performance Demonstrating good conduct Dedicating time for practice and rehearsal Showing responsibility with regard to: Attendance Punctuality Care of equipment Use of the band facility Fundraising obligations

### **HOW TO DEMONSTRATE SUDA/KHSML Pride**

- Be the first, never the last, to rehearsals.
- Always have the needed and required rehearsal equipment.
- Wear appropriate rehearsal attire – proper shoes, shorts, etc.
- Demonstrate desire, spirit and enthusiasm for learning, working, and contributing.
- Be one of those students who are always “there.”
- Prepare and master your part of the performance in advance when possible.
- “Only your best is good enough.”
- Refrain from making comments or carrying on a conversation during a rehearsal.
- Maintain eye contact with Instructor or Officer in Charge.
- Use “High-Intensity Listening.”
- Stop immediately when cut-off is given or move is completed.
- Exhibit enthusiasm for practice and understand the need for repetition.
- If you experience failure, analyze it and make a plan to improve and succeed the next time.
- Turn work into play. Enjoy rehearsing – hot, cold, or rainy. Try to learn something new every day. Remember: “The Band will only be as good as my attitude and my contribution.”
- Be humble in your success. Demonstrate class in all situations.
- Prepare for the next rehearsal.

## MEMBERSHIP

The King High Marching Lions are made up of both instrumentalists and auxiliary members. **All instrumentalists are expected to participate the entire school year in both marching and concert groups.** Instrumentalists may also participate in jazz band, which is voluntary and meets outside of the school day (this group is primarily made up of those members of the wind ensemble.) Membership in the Marching Lions and band program is an opportunity and privilege. Any students who abuse that privilege are subject to removal from the band program.

## ACADEMIC ELIGIBILITY / COMMITMENT TO BAND PROGRAM

In order to participate in band activities, a band student must maintain a cumulative G.P.A. of 2.0 or higher. Eligibility will be determined each semester by the cumulative Grade Point Average. A student must be in attendance at school at least ½ day on the day of, or the last day before a performance. A student must attend the last rehearsal before a performance in order to be eligible to perform.

There are only two options regarding commitment.

You're either in or you're out.

There's no such thing as life in-between.

- Pat Riley

## GRADING POLICY

The grading system for all band courses at King High School is based on a hybrid of a point and percentage scale. Students' final grades are based on four areas: daily participation (20%), written/computer work (10%), pass-offs (30%), and rehearsal and performance attendance (40%). Below students will find how each component figures into their final grade as well as how he/she can make up any points he/she may not receive due to extenuating circumstances. *IB students are not exempt from any of the components because of rotation out. The band director will explain this in more detail.*

### COMPONENT ONE

#### **Class Participation and Preparation 10%**

Students are expected to be prepared with all the necessary materials and participating. These points may be sustained by doing all of the following:

- ✓ Be on time to class
- ✓ Be attentive in class
- ✓ Have instrument
- ✓ Participate in class
- ✓ Have music that was assigned and that is being rehearsed
- ✓ Have a pencil

**COMPONENT TWO**  
**Rehearsal Participation and Preparation 20%**

Students will be required to attend after school rehearsals and be prepared with with all the necessary materials. These points may be sustained by doing all of the following:

- ✓ Be on time to rehearsal
- ✓ Be attentive in rehearsal
- ✓ Have instrument
- ✓ Participate in rehearsal
- ✓ Have music that was assigned and that is being rehearsed
- ✓ Have a pencil

**COMPONENT THREE**  
**Classwork (Theory/Written Assignments) 30%**

Students receive points for various written assignments and computer work assigned throughout the quarter. It is each individual's responsibility to keep up with these assignments regardless of absence. This includes bellwork, classwork, and homework.

**COMPONENT FOUR**  
**Performances (Pass-Offs, Concerts, MPA's) 40%**

Students earn points for attendance at each rehearsal and each performance. Any rehearsal or performance that is not announced with at least 2 weeks notice is subject to additional points that can be earned. It is important to note that ALL performances are treated as test grades! Students will be expected to submit weekly assignments on Smart Music. Students can earn the points mentioned above by doing all of the following:



## POSSIBLE POINT DEDUCTIONS

Points may be deducted from a student's overall grade for any of the following:

1. Not dressed out for rehearsal .....	10
2. No gloves for rehearsal (marching brass) .....	10
3. Not having music or pencil for rehearsal .....	5
4. Measures not numbered .....	5
5. No instrument/equipment for rehearsal .....	10
6. No instrument/equipment for performance .....	15
7. Instrument dirty, tarnished or poorly maintained .....	10
8. Forgetting band shako (uniform hat) .....	15
9. No gloves for performance .....	10
10. Dirty or stained gloves for performance .....	5
11. Improper under-uniform (Band t-shirt, shorts) .....	10
12. Show shirt not tucked in .....	5
13. Wrong shoes for performance .....	10
14. Wrong socks or stockings .....	5
15. Improper uniform for concert performance .....	5 to 10
16. Hair not put up .....	5
17. Jewelry (must be removed for performances) .....	5
18. Uniform worn improperly .....	5
19. Dirty shoes .....	5
20. Tardy .....	5 to 10
21. Gum, food, or drink in band facility .....	10
22. Use of profanity .....	varies
23. Poor attitude/lack of effort .....	10
24. Not remaining in position during inspection .....	5
25. Handling equipment not belonging to or assigned to you .....	5
26. Leaving folder/instrument/equipment out of place .....	5
27. Not following uniform check-in/check-out procedures .....	5
28. Not having music binder for class .....	10

## **ATTENDANCE POLICY**

1. Outside of the normal school day, all members of the KHS Band are expected to attend scheduled rehearsals, sectionals and performances and are graded on their participation in these events.
2. Students and parents are notified at least two weeks in advance of these rehearsals, sectionals, and performances or changes therein. In the event that something is scheduled with less than two weeks notice, students will perform on a voluntary basis and may receive bonus points for their participation.
3. A student who is unable to attend a scheduled rehearsal, sectional or performance will not be able to receive those points toward his/her grade. During marching season he/she may also need to do extra work to retain his/her spot in the Festival show.
4. Students will be given the opportunity to make up any points they may not be able to earn. (See section on grading procedures.)
5. If a student misses more than one rehearsal in a week it is understood that he/she may not be prepared to perform and will not perform until the director is satisfied he/she knows his/her part.
6. If a student misses the rehearsal immediately prior to a performance that student may not perform but IS expected to attend that performance in full uniform.

7. When a student misses a rehearsal or sectional he/she should submit a written explanation from a parent or guardian to the Band Captain **TWO WEEKS PRIOR TO ABSENCE**.
8. When a student misses a performance he/she should submit a written explanation from a parent or guardian directly to the Band Director **PRIOR** to absence.

#### **Top 4 “BAD” excuses for missing practice...**

- “I have to work”
- “I have a doctor/dentist/orthodontist appointment”
- “I have a paper/homework due tomorrow”
- “I didn’t know (I forgot) we had practice/performance tonight”

### **OVERVIEW OF EXPECTATIONS**

Each band member is expected to do the following:

- ◆ Attend all rehearsals and performances.
- ◆ Be prepared for rehearsals and performances.
- ◆ Be on time for all classes, rehearsals, and performances.
- ◆ Keep instrument and equipment in performance condition.
- ◆ **ALWAYS** have a pencil.
- ◆ Be ready to play at the downbeat of the conductor.
- ◆ Understand the duties of the Officers so that he/she may work with them and not against them.
- ◆ Practice regularly at home (three hours per week minimum) and study privately if at all possible.
- ◆ Keep the band facility neat, clean, and free of litter.
- ◆ Keep up with and be responsible for the music and equipment issued to him/her.
- ◆ Demonstrate KHS Marching Lion Pride, as described in the beginning of the handbook.

**The success of our band and level of performance is directly related to the commitment of each student to attend ALL scheduled events.**

### **BASIC RULES**

- Students must abide by the Hillsborough County Schools Code of Student Conduct, King High School Student Rules, and the KHS Marching Lions Band Handbook.
- A serious disciplinary infraction may result in subsequent suspension from Band activities or removal from the program.
- Any instrument or equipment not belonging to or specifically assigned to you is strictly off limits.
- During the regular school day, the band facility is to be used for regular classes, rehearsals, sectionals, and pre-arranged help sessions only. The area is off limits during lunch unless you are notified otherwise.
- No gum, food or drink is allowed in the band facility.
- No gum is allowed at any performance or rehearsal; while in uniform or under-uniform; or on any band trip.
- For security reasons, the band room is off limits to non-band students.
- Listen twice as much as you talk.



## INDIVIDUAL BAND-RELATED ACTIVITIES

- **Private lessons** are strongly encouraged.
- **All-State Bands** – Auditions are held in early September. Students who qualify will travel to the Florida All-State Clinic in Tampa in early January. They will rehearse with top students from across the state and present a concert at the end of the clinic.
- **All-County Band** – Auditions are held in November. The group is selected by audition. They will rehearse with top students from Hillsborough County and present a concert in January.
- **Solo & Ensemble Music Performance Assessment (MPA)** – Held in February. Students prepare a music selection for district-level evaluation. Those who earn a Superior (playing Grade V or higher) will qualify for the State Solo & Ensemble MPA in March or April.

## FULL BAND ACTIVITIES

- **Band Camp** – All members of the band, both freshmen and returners, are required to attend band camp in preparation for the coming year. This is an opportunity to become familiar with the band director, marching techniques, and Marching Lions community.
- **Football Games** – The marching band plays at every regular season football game and is responsible for maintaining a high level of school pride with the team and fans.
- **Parades** – every year the KHS Marching Lions performs in the Temple Terrace 4<sup>th</sup> of July Parade as well as the Tampa Bay Gasparilla Parades.
- **Fundraising** – Each student is responsible to do his/her share and help raise money in order for the band to continue to function at an exceptional level.
- **FBA Marching/Concert MPA Festival** – Each semester culminates in an evaluation of the work of the band in various venues including both the marching field and concert stage.
- **Seasonal and Spring Concerts** – In an effort to display the hard work of the students, each semester the band programs will put on a concert; one during the holiday season and the annual Prism Concert held at the conclusion of each Spring term.

## BAND ORGANIZATIONS

### Marching Band – King High School Marching Lions

- ◆ Personnel All students enrolled in Band classes
- ◆ Activities Band Camp – pre-season marching  
Football game performances and pep rallies  
FBA District Marching MPA/Evaluation  
Selected marching contests  
Public service performances
- ◆ Rehearsal Schedule Regular class meetings  
After-school rehearsals (see calendar for specifics)
- ◆ Exemption Requests for an exemption from Marching Band  
may be submitted to the directors for the following:
  - Medical or physical restriction or disability
  - Other – see director

### Wind Ensemble - Symphonic Band - Jazz Band

*Students are divided among the two bands. Within each band, there are chair auditions. Bands will be re-auditioned each year.*

- ◆ Personnel **Wind Ensemble** – First band  
Plays most difficult music, after-school rehearsals, Additional sectionals, possible extra trips & performances  
**Symphonic Band** – Second band  
Plays less difficult music, fewer after-school rehearsals
- ◆ Activities Concerts as scheduled  
Pre-MPA (District) Concert  
FBA District Concert MPA  
FBA State MPA  
Graduation performance  
Special events and trips as scheduled  
Prism Concert
- ◆ Rehearsal Schedule Regular class meeting  
After-school rehearsals (see calendar for specifics)

## **Jazz Ensemble(s)**

*Co-requisite – Wind Ensemble, Symphonic Band, Percussion class*

◆ Personnel

**Jazz Ensemble**

Will meet at a time that fits the majority schedule, TBA by director, plays more difficult music, after-school rehearsals

◆ Activities

Community concerts  
School performances  
Holiday Concert  
FBA District Jazz MPA  
Prism Concert

## **Lionettes Color Guard**

◆ Personnel

Selected by audition

◆ Activities

Band Camp - pre-season marching camp  
Football game performances  
FBA District Marching MPA & marching contests  
Public service performances  
FBA Solo & Ensemble MPAs  
Selected dance contests  
Prism Concert

## **BAND AWARDS**

• **Medals** - Medals are awarded for superior rated performances in any area of Florida Bandmasters Association District and/or State Music Performance Assessments including Marching, Concert, Jazz, Solo & Ensemble, Dance and Student Conductor.

• **Letters** - Each student will receive a chenille award letter upon completion of his/her first full year of satisfactory participation in the Band Program as determined by the Band Director. (Academic ineligibility during either semester prohibits full participation.)

• **Service Bars** - Each student will receive a bar for each year of satisfactory participation after the letter has been awarded. (Academic ineligibility during either semester prohibits full participation.)

• **Outstanding Section Award** - This is awarded to the outstanding section of the year.

• **John Philip Sousa Award** - This is a national award, which is presented to the outstanding band student in the program.

• **Louis Armstrong Jazz Award** – This award is presented to the outstanding Jazz student.

• **SUDA Award** – Added in 2009-2010; Selected by student ballot, this award is presented to the student who most personifies SUDA/KHSML Pride.

• These awards are just a few of the awards given at the annual end-of-the-year banquet.

## MUSIC

Replacement of lost music is expensive and time-consuming. Each band member is responsible for the music issued to him/her. The following guidelines will be observed:

### Sheet Music

- No sharing - Each student will have his/her own binder.
- Each student is to put his/her name on the top right corner of each piece of music (print neatly). Binders must also be labeled.
- When not in use, the binder - with all music in it - will be kept in the case with the instrument or in the Instrument Storage Area, never left out in the Band Room.
- Replacement of music will cost 25 cents per page. Give request and money to a librarian.

## MARCHING LIONS BAND CAMP

Band Camp will be held every summer prior to the start of school. Participation is mandatory as this time is used to teach and refine marching skill, as well as determine marching and sectional part placement of each member. The dates for camp will be set in April or sooner (as soon as the school calendar is published) so that family vacations may be planned accordingly.

## BAND CAMP HYDRATION & HEALTH TIPS

### TIPS TO PREVENT HEAT RELATED ILLNESS DURING PHYSICAL ACTIVITY

High potassium foods are a quality source of energy and should be consumed regularly to maintain energy and stamina.

### HIGH POTASSIUM FOODS

<b>FRUITS</b>	<b>VEGETABLES</b>	<b>OTHER</b>
Oranges	Dried beans	Peanuts
Orange Juice	Peas & lima beans	Almonds
Bananas	White & Sweet Potato	Pecans
Apricot	Baked, boiled, mashed Potato	Tomato Sauce & Spaghetti
Kiwi	Mushrooms	
Pear	Avocado	
Nectarine	Pumpkin	<b>Dried Fruit</b>
Cantaloupe/Melon	Asparagus	Dates
	Tomato	Figs
		Prunes & Prune Juice

## Before Physical Activity

- Drink plenty of fluids during the day\* especially 1 ½ to 2 hours prior to physical activity. Fluids that are recommended are WATER, FRUIT JUICES and other approved energy drinks.

Note: Caffeinated beverages have a dehydrating effect on body and will not aid in keeping you hydrated properly. AVOID CAFFEINATED SODAS, TEA and drinks containing other high processed sugars.

\*The easiest way to tell if you are hydrated enough is to check the color and quantity of your urine. If urine is dark and decreased in volume, then you need to drink more fluid.

- Just prior (5-15 minutes) before physical activity drink 12 cups of water which will prepare your body to have enough extra fluid to replace your initial sweat loss.

## During Physical Activity

- KEEP DRINKING WATER (or approved sports drink such as Gatorade, Powerade, etc.) during your activity. DO NOT WAIT UNTIL YOU ARE THIRSTY – your thirst signal in your body will not be a good indicator to keep up with your needs. Always drink more than what quenches your thirst. Guideline: drink 8-16 oz. after 15-20 minutes of strenuous exercise. Don't skip your water breaks. DRINK!!!

**Hyperthermia**, or overheating of the body, can be mild and temporary, but in advanced stages, it can be life-threatening. The degrees of severity:

\***Heat Exhaustion** is often caused by dehydration or sodium depletion, but do not take salt supplements without medical advice.

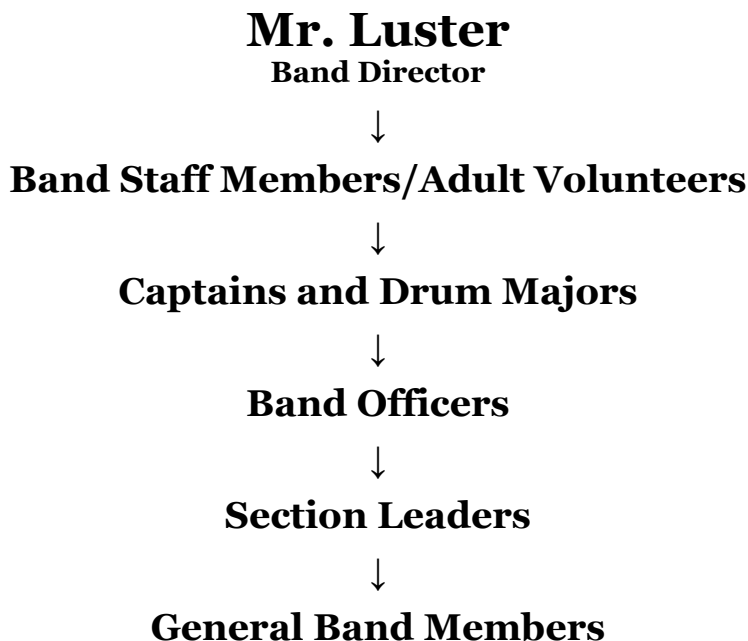
\*\*With **Heatstroke** perspiration stops; person may faint or stagger, become confused or combative; coma begins if person is not assisted.

## MARCHING REHEARSAL PROCEDURE

1. During football season, full marching rehearsals are scheduled for every Monday and Thursday after school. See calendar for specifics.
2. Check board for any specified music and equipment needed. "Dressing out" (wearing appropriate clothing and sneakers) is required.
3. Meet in the band room prepared to begin at the start of rehearsal time. Down beat will be given at the specified time. Be early!
4. The Drum Majors and Captains have authority until the Director reaches the field.
5. No playing to and from the practice field.
6. Marching band shoes or sneakers must be worn at all times. No sandals, flats, pumps, boots, etc. are allowed.
7. Alertness is required, and one should react immediately to all commands and instructions.
8. Marching rehearsals will be most efficient if all members are diligent in correcting mistakes quickly and thinking ahead to the next move. Above all, take pride in every minute of rehearsal so that we can all take pride in our final product – the performance.

## **BAND HIERARCHY**

It is imperative that each member understands their role and where they fall in the band hierarchy, or chain of command.



## **FOOTBALL GAME GUIDELINES**

### **Home Games and Away Games**

1. Practice and performance attendance is consistent with that mentioned previously. In addition, a student that misses more than one rehearsal in a given week may find that an alternate has filled his/her spot until the band director feels that student has learned the position.
2. Students should report at least 30 minutes prior to inspection to get their uniform and change (see section on inspection and uniforms.)
3. Students late for inspection will forfeit their 3<sup>rd</sup> quarter break for that game.
4. Band members play and cheer throughout the game...that is why we are there. Keep an eye on the game and the drum majors.
5. During 3<sup>rd</sup> quarter break, band members are to stay in the area designated by the band director.
6. While in the stands, band members will sit with their section.
7. Band members are expected to hold on to their belongings (i.e., shako hat, instrument, water) while in the stands.
8. When a student misses a performance he/she should submit a written explanation form a parent or guardian directly to the band director.
9. Band members should be in the stands in his/her section by the end of 3<sup>rd</sup> quarter.
10. There should be NO food, drink, candy or gum in the stands.

# UNIFORMS

## **Marching Band Uniform**

- A uniform will be issued to each student upon receipt of the annual band fee. Students will be held responsible for the uniform issued to them. Replacement of a lost or damaged uniform could cost as much as \$400.00. Uniforms will be kept at school and cleaned as needed.
- King High School is known for its modern and unique marching uniform. Each member should wear it with pride and maintain it appropriately.
- The Marching Lion uniform consists of the following items (there are not alternatives to what is listed below):
  - Uniform jacket, pants, hat and plume
  - White lace-up band shoes
  - White socks
  - Gloves
  - Show Shirt
- Personally supplied accessories will include the following:
  - White lace-up band shoes
  - White crew socks
  - Solid black shorts – No spandex unless worn under other black shorts
  - Official band T-shirt (issued to each student at band camp)
  - White gloves

**Note: These items are considered part of the uniform.**

- Hats (shakos) must be worn at the correct angle. Hair must be up under the hat.
- No jewelry (including wristwatches) allowed.
- No hair ornaments (except black scrunchies) allowed.
- No fingernail polish (except clear) allowed.
- When in public, the uniform is to be worn correctly and in its entirety.

## **Concert Uniform**

- The KHS Lions concert uniform consists of the following items and EACH student should purchase these items on his/her own, excluding the uniform jacket and concert dress (which is ordered at the beginning of the year):

### **Gentlemen**

- Button-up black long-sleeve shirt, black dress pants
- Black, lace-up, dress shoes
- Black long dress socks

### **Ladies**

- Concert Dress (\$90)
- Black Panty Hose
- Black, closed-toe, dress shoes
- Students will personally supply black shoes and socks for males/low-heeled black pumps and black stockings for females - No open-toed shoes or sandals.
- Hair must be up in a bun or ponytail. Use black hair ornaments only.
- Stud earrings are allowed.
- No fingernail polish (except clear) is allowed.

## **Jazz Uniforms**

- All solid black. (Button-up black long-sleeve shirt, Black dress pants, Black dress shoes, Black long dress socks)
- Tie (provided by the band)

## **INSPECTION**

1. Inspection of your uniform and instrument is a vital part of the Marching Lions program. It is a serious time and should be treated that way.
2. All band members will go through a formal inspection before each performance.
3. Band members will be inspected for appropriate playing condition of his/her instrument and appropriate condition of uniform and accessories.
4. Passing inspection will enable band members to receive the following:
  - 3<sup>rd</sup> quarter break
  - ability to perform
  - points added to grade
5. Listed below are items to check that will help you to pass inspection:

### **Marching Uniform**

- ✓ Appropriate and clean shoes
- ✓ NO jewelry worn while in uniform
- ✓ Hair in shako hat
- ✓ Clean mouthpiece
- ✓ All instrument slides/valves/keys working properly
- ✓ Instrument polished
- ✓ Reed not broken or cracked
- ✓ Clean white gloves
- ✓ Clean White Crew socks
- ✓ Show Shirt worn

### **Concert Uniform**

Gentlemen

- ✓ Black socks, tuxedo shirt, black bow tie
- ✓ Instrument in good playing condition

Ladies

- ✓ Appropriate dress, shoes and panty hose
- ✓ Instrument in good playing condition

## **PEP RALLIES**

1. ALL band members will wear their show shirt (tucked in) and blue jeans for performance in pep rallies.
2. It is important that you report directly to the band room when you are dismissed from class. This enables us to prepare for the pep rally in a quick and orderly manner.
3. The job of the band is to provide entertainment and support of the school at all pep rallies. Be ready to play at any time and stay with your section.
4. There is NEVER A TIME when it is appropriate to “Boo” anyone (this is true for ANY performance we attend.)



## DAILY CLASSROOM/REHEARSAL/PERFORMANCE NEEDS ASSIGNED TO EACH STUDENT

Each band member is expected to have items listed below in class everyday. Items listed below are part of the music curriculum and will be assigned at the beginning of the school year and collected at the end of the school year (with the exception of the theory text book). Students not returning all materials and/or music will be placed on the School District of Hillsborough County debt list.

1. **Black Binder**– contains all music necessary and other various functions (*available online*)
2. **Alfred's Essentials of Music Theory Workbook** – text book from which all mid-term and final exams are created. (*provided at the beginning of the first year*)

### Additional Necessities for Continued Marching Lion Success

In addition to the items listed above, each student is also expected to have the following items for each class period everyday, rehearsal or performance.

1. **Instrument(s)** – it is the student's responsibility to have any instrument (this would include any sticks or mallets for the percussion) he/she needs for each class period, rehearsal or performance.
2. **A PENCIL** – so that the student can mark his/her music appropriately in rehearsals (but not mark it permanently.)
3. **Tuner (or tuner app)**

## INDOOR REHEARSAL PROCEDURES

### Storage of school books/backpacks

You may use the areas provided in the band room while you are in band classes only. The band facility will not serve as your school locker. If you need it for another class, don't leave it in the BAND room.

### Use of the instrument lockers

- If your instrument is not stored in a specific locker, do not open it at all.
- If your instrument is stored in a particular cabinet, use the following procedure:
  - Open the cabinet.
  - Remove your instrument in the case.
  - Sit in your concert seat before you remove the instrument from its case.
  - Store the empty case (during rehearsal) at your seat or as directed.
  - At the conclusion of rehearsal, return instrument to its case before you leave your seat.
  - Return to the instrument cabinet.
  - Exit immediately.

## Rehearsals in the Band Room

- Required equipment – instrument in good working order, no less than 3 playing reeds, necessary mutes, music in order, pencil, etc.
- **Before rehearsal begins, you may warm up individually (long tones on low notes and scales) until the director steps onto the podium. At that moment, all playing and talking should stop.**
- Correct posture is essential to proper breathing and will be required at all times. Sit on the edge of your chair with shoulders relaxed and head held high. Percussionists must stand when playing.
- If you need to ask a question during rehearsal, raise your hand and wait to be recognized. Otherwise, there will be no talking during rehearsal.
- The agenda for the class period will be listed on the front board. Once the director steps onto the podium, the ensemble needs to be prepared to play at his/her downbeat.

## PERFORMANCES

- All members are expected to attend every engagement in which the band participates. If you are unable to attend a performance, you must inform the Director in advance. Sickness or death in the family are usually the only legitimate excuses for missing a performance.
- No band member is permitted to leave the organization in advance of group dismissal at any time unless excused by the Director prior to the performance.
- Regulations regarding rehearsals are also in effect during all public performances.
- For out-of-town engagements, the band travels as a unit unless they have been otherwise directed. Each band member is personally responsible for all of his own equipment, whether school or personally owned. For all out-of-town engagements, no band member may travel in a private car without the consent of the Director.
- Band members must report to the designated place at the time stated, in order to prepare for performance.
- Information regarding each performance will be posted in advance in the band room. It is the responsibility of individual members to be informed of all notices and scheduled events.



## TRAVEL

- Transportation will be provided or approved by the school. All members must travel with the band.
- When traveling on school buses, each band member is responsible for placing instruments and equipment to be loaded on the equipment vehicle in the designated loading area. Smaller instruments (flute, clarinet, alto sax, trumpet) will be carried on the buses.
- When traveling on charter buses, place instrument and equipment on the curb next to your bus, or as directed. Loading crew will load the cargo bays. Smaller instruments will be carried on the bus.
- All students must ride the buses they signed up for. If specific seats are assigned, there will be no changes in these assignments. The Director will ride Bus 1. Chaperones will be assigned to each bus. One officer will be assigned to each bus to check roll and report results to the Director.
- Standard rules of conduct for school buses are in effect for all trips.
- Upon arrival, everyone will remain seated on the buses until the Band Director gives instructions.

## OVERNIGHT TRIPS

- Room assignments will be made in advance.
- All school and band rules will be in effect, plus the following:
  - No boys in girls' rooms, and vice versa.
  - Keep noise at a minimum.
  - Do not leave the hotel grounds unless directed to do so by the Director.
  - Never ride in a private automobile without specific permission from the Director.
  - Curfew will be strictly observed.
- Any serious infraction of the rules will result in the offending student(s) being sent home. Other disciplinary action will follow.



## CHAPERONE GUIDELINES

The support and assistance of parent chaperones is necessary to the success of band activities. Selected parents of band students will act as chaperones at band functions. Chaperones are expected to support the philosophy of the program as stated by the directors. Chaperones will ride on the buses and stay with the band during the entire activity. Anyone who volunteers to be a chaperone accepts certain responsibilities and will be expected to carry out assigned duties. The Band Director will coordinate recruitment of chaperones for overnight trips. Punctuality is necessary. Chaperones are prohibited from consuming alcoholic beverages immediately before or during band activities or trips. Smoking is not allowed. The Directors will make rules and guidelines with the safety and welfare of the band members in mind.

### Duties and Responsibilities

- Report on time and pick up your chaperone badge from the Chairperson. Bus and duty assignments will be made at this time. Turn in chaperone badge at event's end.
- There will normally be two to four chaperones on each bus.
- Stop all conversation during roll call. A student officer will check roll and report to the Director on Bus 1.
- See that all KHS band rules are followed. Basic rules appear in this handbook. The Director will provide more specific rules as needed.
- While the band is out of the stands (performing or break during third quarter) some chaperones will stay to watch the seating area, while most will help with equipment.
- There will be no food, drink, or gum in the band seating area except coolers of ice water.
- Individual permission to leave the seating area may only be granted by the Director.
  
- The band will not leave the seating area until instructed to do so by the Director. Restrooms can be used during third quarter when the band is dismissed for break.
- After the band has left the seating area at the end of the game, check to be sure that all trash is picked up and put in garbage bags, and that no items have been left behind.
- For safety reasons, when leaving a football game, close all bus windows and keep them closed until the bus is several blocks away from the stadium.
- When the students have left the buses at the conclusion of a trip, check to be sure that the bus is neat and clean, that all windows are up, and that no belongings have been left behind.
- If you have a problem with any student not following directions or showing disrespect, see the Director immediately. The role of a chaperone is to guide and assist. The Band Director will handle all discipline problems.
- If a student becomes ill enough (in the opinion of a chaperone) to warrant calling his/her parents, the Band Director will be informed of the situation and will be responsible for contacting and discussing the problem with the parents. If there is such a problem, see the Director!
- Please be reminded that your children who are not band members are not to be brought with you when you chaperone. If you have any questions concerning chaperoning, or to volunteer to chaperone, please contact the Chaperone Coordinators whose names appear below on the Band Booster Board of Directors list in this handbook.

## **BAND BOOSTERS**

The purpose of the KHS Band Boosters is to advance the best interests of the King High School Band and Lionettes by giving support as requested by the band director. Maintaining an active band program requires support and funding beyond that provided by the school system. The King High School Band Boosters organization was established in 1974 as the King High School Music Club (renamed in 2005) to provide this support to both the band and auxiliary in any way they can. Some of the ways the Band Boosters provide assistance are chaperoning events, helping in securing funds for instrument/equipment replacement and repair, uniform replacement and upkeep, and providing venues to award individual and group accomplishments. Other activities include the provision of funds for the purchase of music and supplies requested by directors, furnishing chaperones for band events, the organization and implementation of fund-raising activities, the encouragement of new parent involvement, and the support and advocacy for music programs in the public schools. There are three levels of membership in the band boosters, each providing different benefits but all providing much needed support for the superior band and auxiliary members.

### **Three Levels of Membership**

#### *Family Membership - \$35.00*

2018 Show Shirt (1)  
Activity chaperoning  
Seating in band boosters section

#### *Conductor Membership - \$50.00*

All items included in the Family Membership  
2018 Lion's Pride Shirt (1)  
You or your company's name on the KHSML website

#### *"C" Note Membership - \$100.00*

All items included in the Conductor Membership  
Additional Show shirt **AND** Lion's Pride shirt

## **BAND BOOSTER BOARD OF DIRECTORS**

### **Officer Positions**

President  
Vice President  
Secretary  
Treasurer  
Chaperone Coordinator  
Lion's Pride Coordinator

## SCHOOL INSTRUMENTS

A limited number of school-owned instruments and specific marching brass and percussion instruments are available for student use. In order to rent one of these instruments, the student must check the instrument out with the Band Director in an agreement that allows the student to use the instrument for a fee of \$42.80 per semester. The student is financially responsible for any damages or loss incurred during the rental period. The rental fee must be paid by anyone using a school-owned instrument.

### INSTRUMENT MAINTENANCE

All instruments must receive regular maintenance. The basics are provided below. For more detailed information, please see the Band Director.

#### Woodwinds

##### General

- Swab the bore after each playing session.
- Periodically oil the keys.
- Wipe the keys and body clean with a soft cotton cloth after playing.

##### Flute

- Periodically check the position of the tuning cork.

##### Clarinet and Saxes

- Rinse the mouthpiece daily with warm water and avoid mouthpiece brushes.
- Always have spare reeds. Rotate them so that you have at least three broken in at a time.
- Buy a reed guard and use it. It will pay for itself within a few weeks.

##### Double Reeds

- Soak reeds before playing on them to avoid cracks.
- Learn to make your own reeds or at least to adjust the ones you buy commercially.

#### Percussion

- Avoid damage to heads by using the proper sticks or beaters for each instrument.
- Become familiar with proper techniques of changing heads, tuning and routine maintenance.
- Keep instrument clean and dry.



Brass Instruments

##### General

- Run lukewarm water through the instrument at least once a week and give it a bath at least once a month. Never use hot water.
- Wear cotton gloves while playing and wipe off all fingerprints after each use.
- Never use brass or other metal polish on brass lacquer finish (shiny gold) instruments. Use a clean cotton cloth and water to wipe instruments clean. On silverplated instruments, use a non-abrasive silver polish such as International, Twinkle, or Wright's.
- Use tuning slide grease on all tuning slides.
- Periodically check corks on water keys to make sure that they are sealing properly.
- Occasionally vacuum your case to keep sand and dirt from scratching the instrument finish.

##### Piston-Valve Instruments

- Use fresh valve oil as needed.
- Be sure fingers remain curved while playing so that the valve action is straight up and down. This will avoid uneven wear on the pistons.
- Check felts to make sure that they are not worn or compacted. Replace as needed.

##### Trombones

- Use trombone slide cream such as *Super-Slick* or *Trombontine* and a spray bottle of water on slide. Do not use oil.
- If trombone has a rotary trigger, use rotary valve oil.

##### Rotary Valve Instruments

- Use rotary valve oil